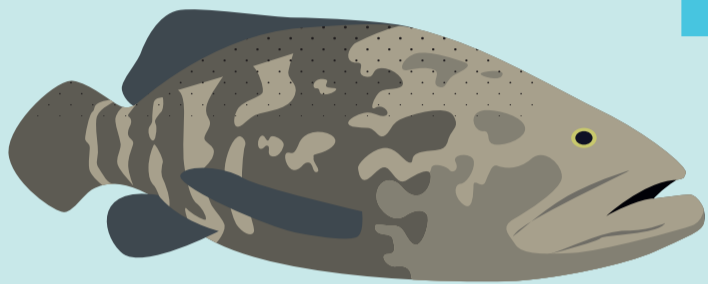


NAPOLEON WRASSE

The Napoleon Wrasse is a globally endangered fish.



GIANT GROUPE

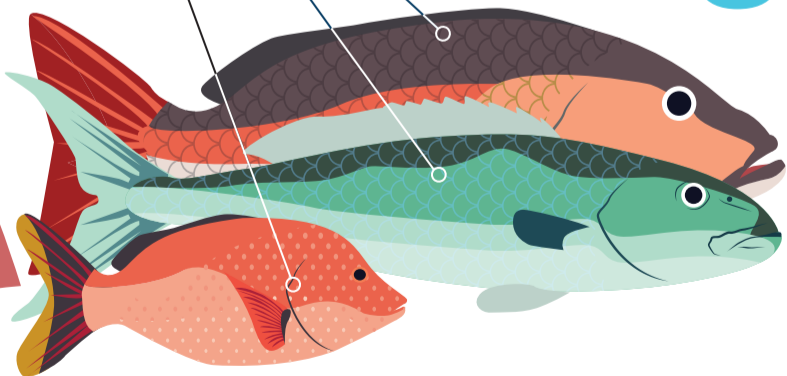
The Giant grouper is the largest bony fish found on coral reefs.



SNAPPERS

Snappers are the most targeted reef fish in the Maldives.

- RED SNAPPER 1.5ft
- GREEN JOBFISH 1.5ft
- HUMPBACK SNAPPER 0.8ft



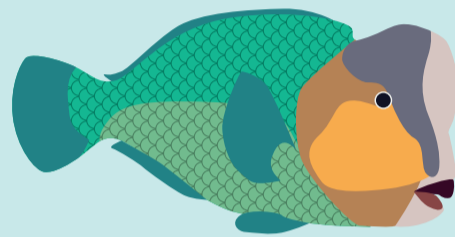
ARM MEASURING

#FISH FOR TOMORROW

ދަދުކަން ސަބަބުގެ ސަބަބު



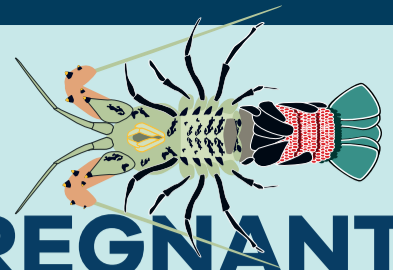
NO TAKE



BUMPHEAD PARROTFISH

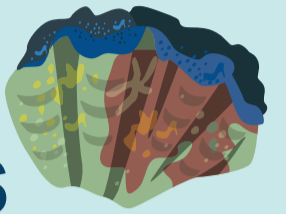
The bumphead parrotfish poops out the sand that makes up Maldivian beaches.

PREGNANT LOBSTERS

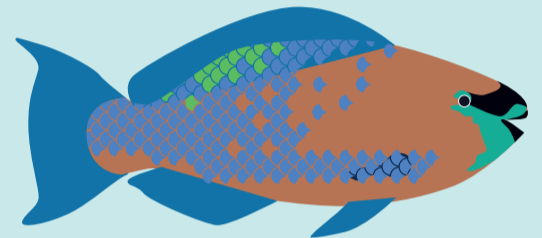


Lobsters produce nearly a million eggs but only a few survive and grow to be adults.

GIANT CLAMS



Giant clams can live for several hundred years—longer than any human has ever lived!



ALL PARROTFISHES

Parrotfish make way for new corals to grow by eating the algae that would otherwise take over!

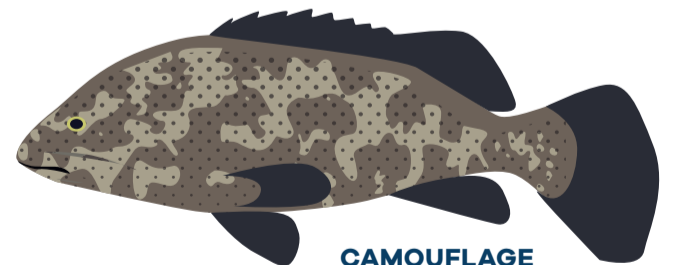
MINIMUM SIZE

GROUPERS

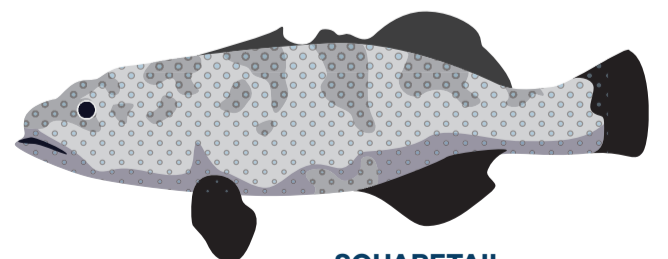
Groupers are the most threatened reef fish in the Maldives.



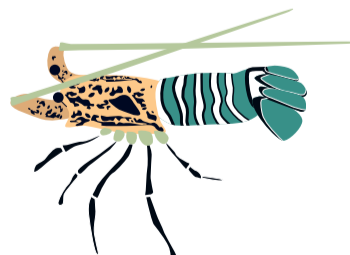
BROWN-MARBLED GROUPE 1.3ft



CAMOUFLAGE GROUPE 1.3ft



SQUARETAIL GROUPE 1.3ft



LOBSTERS 0.8ft

Lobsters live until they are 50- that's longer than a Rhinoceros!